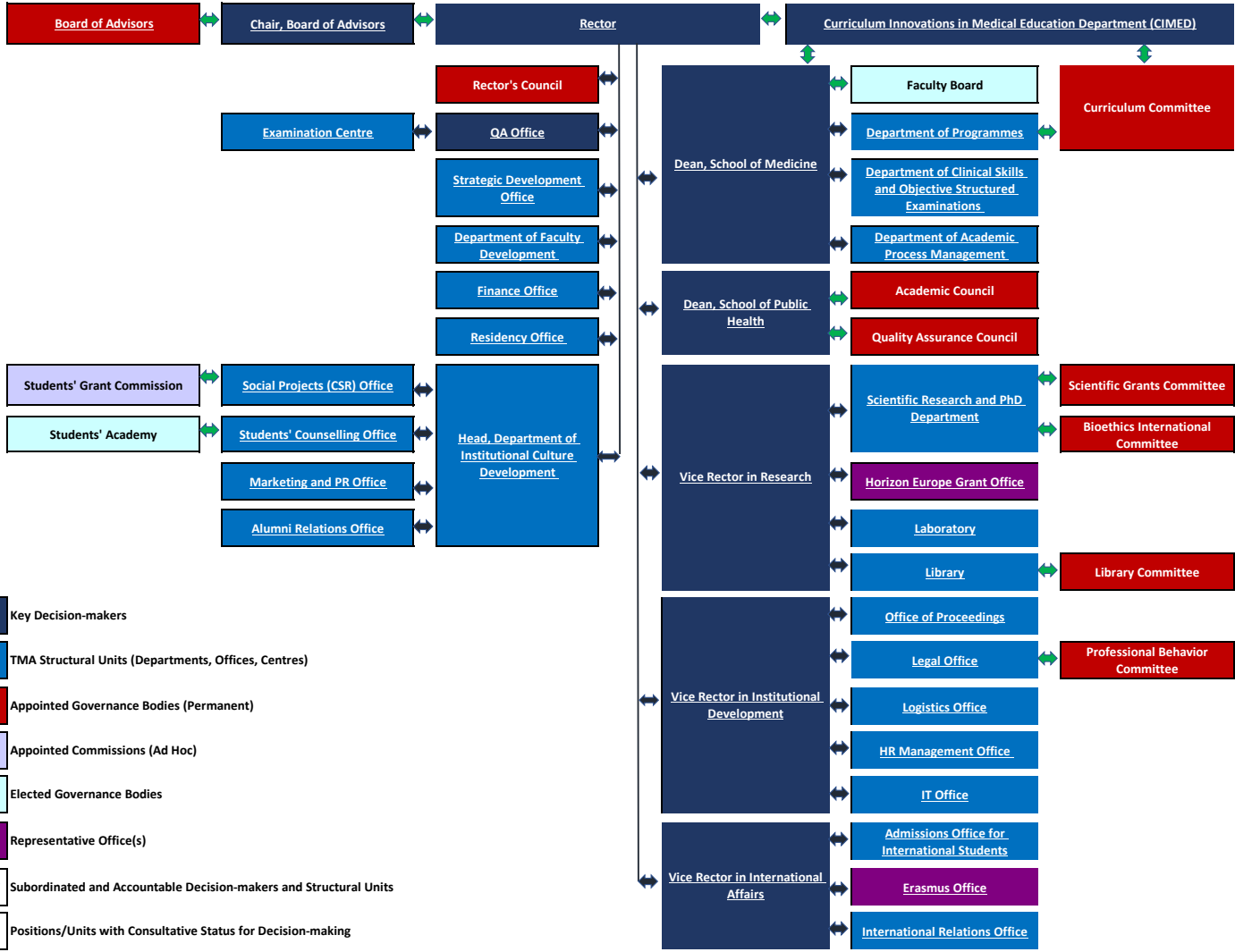


# Tbilisi Medical Academy (TMA) Organogram



- Key Decision-makers
- TMA Structural Units (Departments, Offices, Centres)
- Appointed Governance Bodies (Permanent)
- Appointed Commissions (Ad Hoc)
- Elected Governance Bodies
- Representative Office(s)
- Subordinated and Accountable Decision-makers and Structural Units
- Positions/Units with Consultative Status for Decision-making